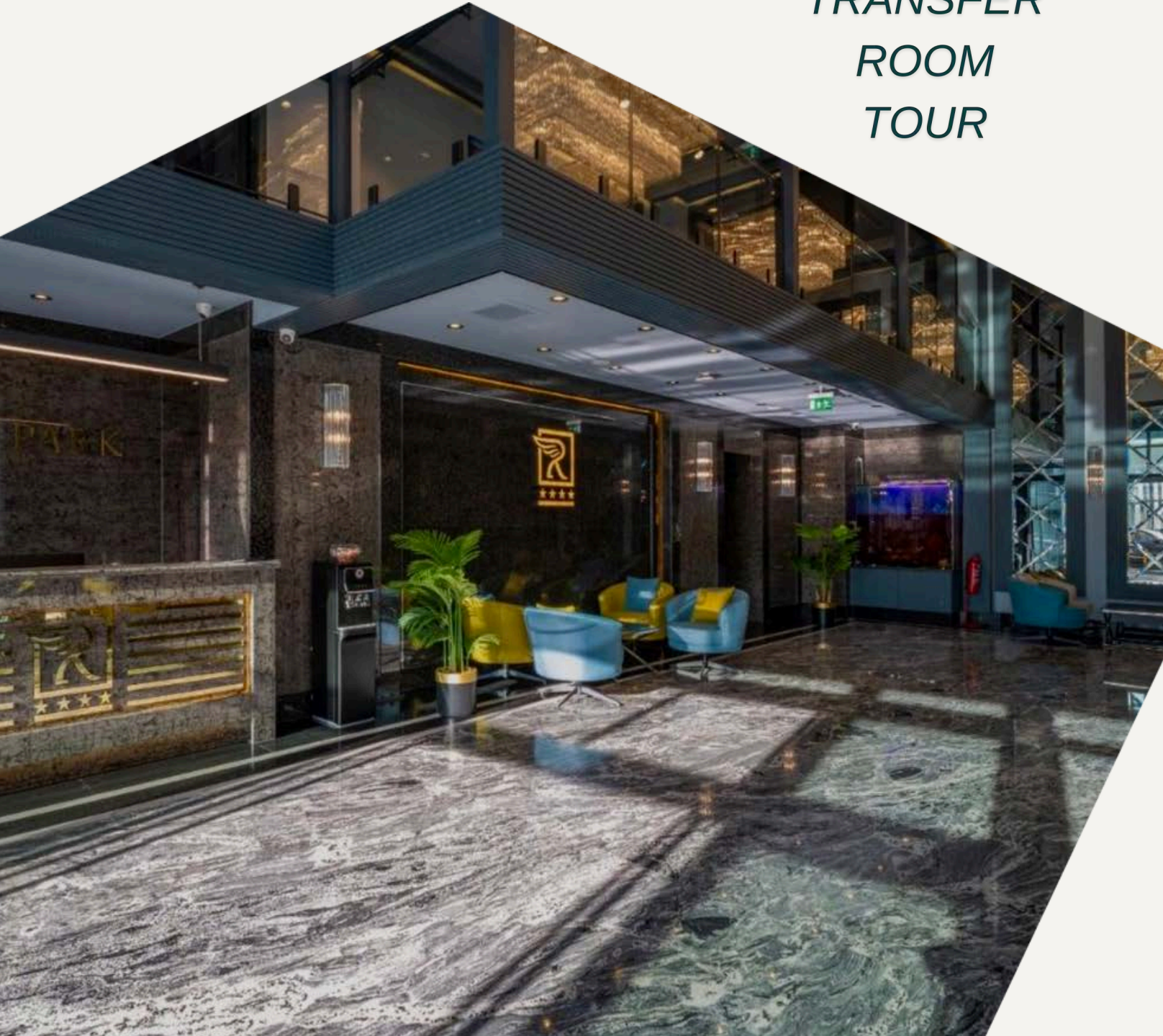




# RUSEL PARK RESIDENCE

*It is pleasure to present the program details for 18-21st of April*

TRANSFER  
ROOM  
TOUR



# Müzist International Piano Competition

**19-20 April 2025**

## APPLICATIONS


8 February - 1 April 2025

[www.muzistipc.com](http://www.muzistipc.com)



This competition is organized for pianists between the ages of 5-24.

*Conservatory students cannot participate in the competition.*

 [muzist.ipc](https://www.instagram.com/muzist.ipc)

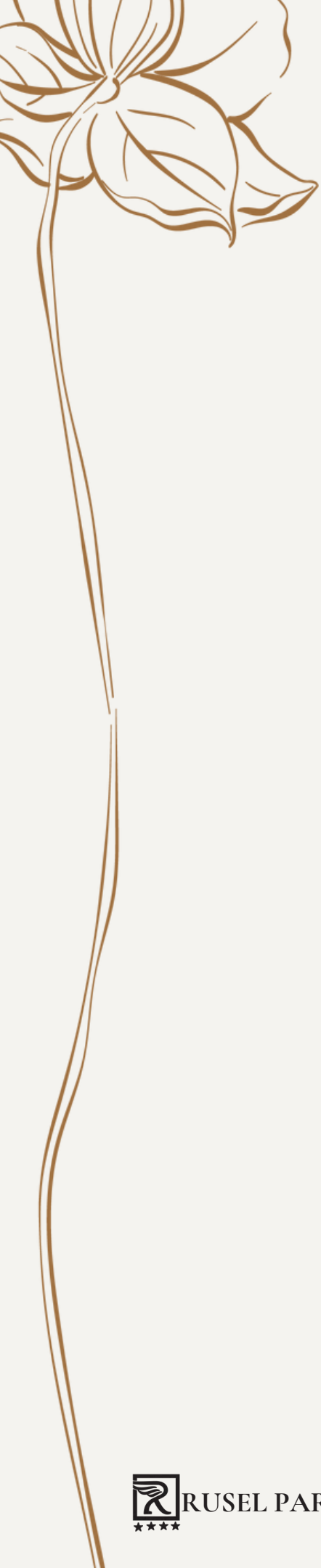
 Bahçeşehir, İstanbul / TURKEY



# TRANSFER SERVICE

| VEHICLE TYPE | CAPACITY      | ISTANBUL AIRPORT | SABIHA GOKCEN AIRPORT |
|--------------|---------------|------------------|-----------------------|
| TAXI         | 4 PEOPLE MAX  | 55€              | 65€                   |
| VITO         | 8 PEOPLE MAX  | 60€              | 70€                   |
| SPRINTER     | 18 PEOPLE MAX | 80€              | 90€                   |



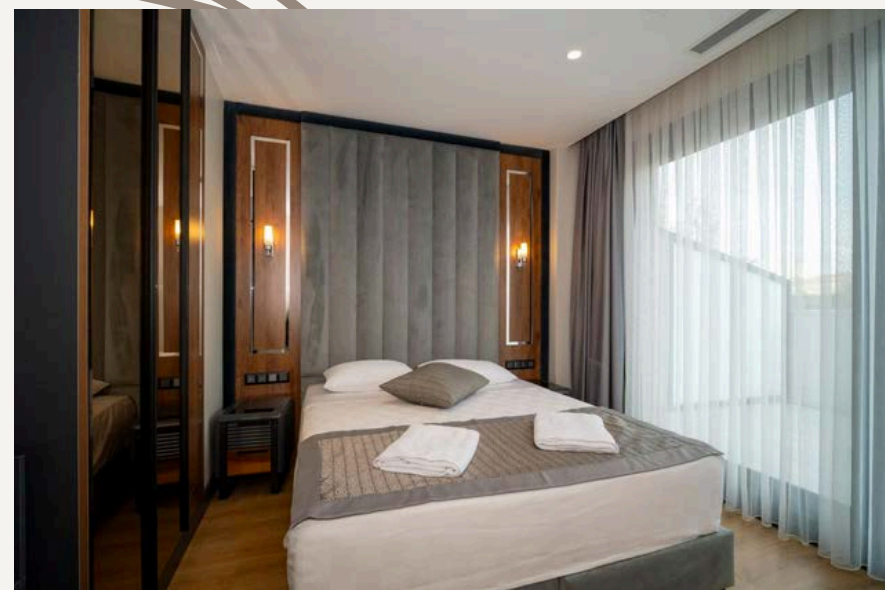
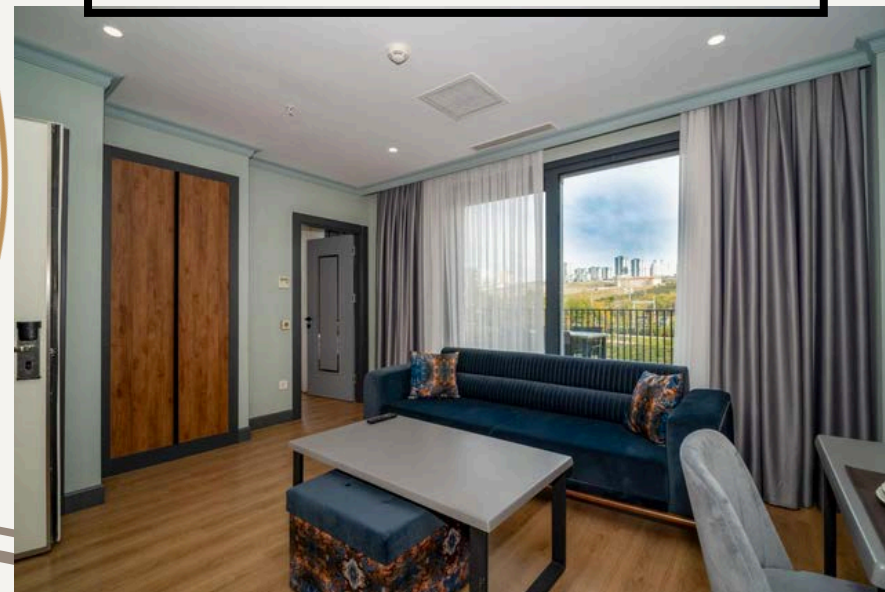


# RUSEL PARK RESIDENCE PRICE LIST

| CAPACITY | FLAT TYPE   | PRICE OFFER |
|----------|---|-------------|
| 1+1      | 1+1 LUXURY APARTMENT– FULL EQUIPMENT- 80 m²               | 70€         |
| 2+1      | 1+1 LUXURY APARTMENT– FULL EQUIPMENT - 80 m²              | 75€         |
| 2+2      | 1+1 LUXURY APARTMENT– FULL EQUIPMENT - 80 m²              | 78€         |
| 1+1      | 1+1 LUXURY APARTMENT FULL EQUIPMENT - WITH<br>OUT KITCHEN | 65€         |
| 1        | STANDARD ROOM   | 60€         |

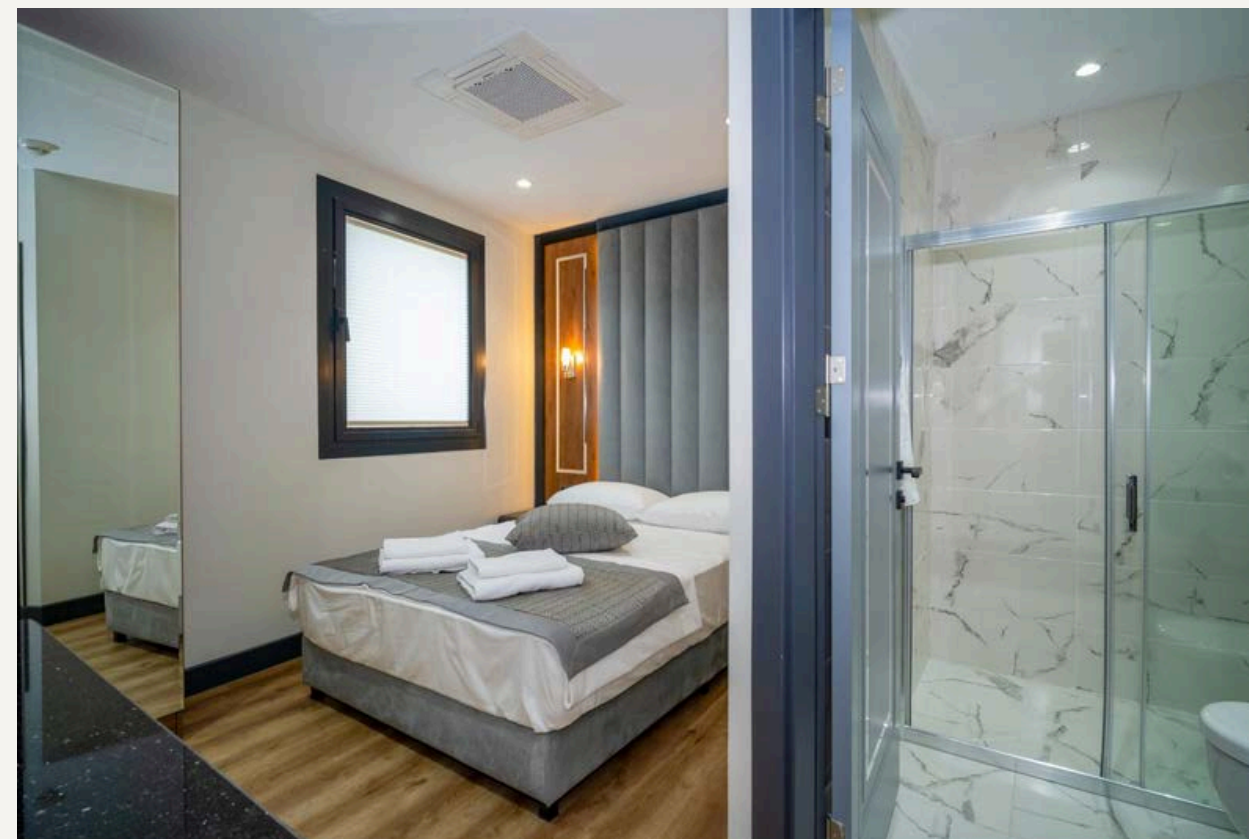


**1+1 LUXURY  
APARTMENT-FULL  
EQUIPMENT - WITH  
OUT KITCHEN**

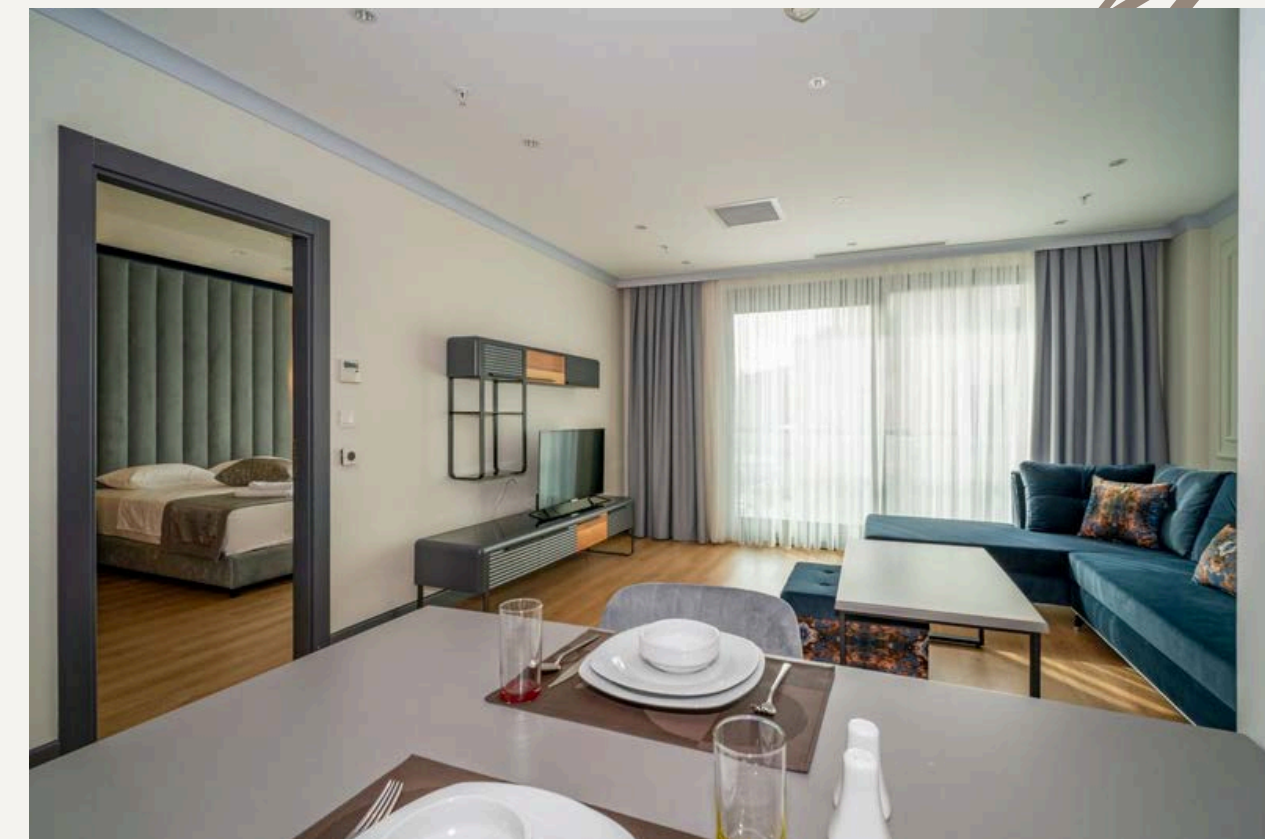


## RUSEL PARK RESIDENCE ROOM IMAGES

**STANDARD ROOM**



**1+1 LUXURY  
APARTMENT-FULL  
EQUIPMENT- 80 m<sup>2</sup>**





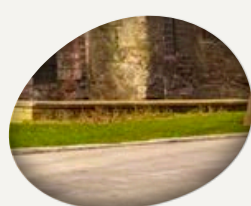


## BYZANTINE & OTTOMAN RELICS TOUR

- **THE DEPARTURE AND ARRIVAL OF OUR ALL-DAY TOUR IS RUSEL PARK RESIDENCE.**
- **YOU WILL BE ACCOMPANIED BY AN ENGLISH-SPEAKING GUIDE DURING THE TOUR**
- **LUNCH IS INCLUDED IN THE PRICE. DRINKS ARE EXTRA.**
- **THE DATE WILL BE ADJUSTED DEPENDING ON YOUR CHOICE.**
- **PRICE IS 160€ PER PERSON.**







|  |  |
|--|--|
|  <p><b>HIPPODROME</b></p> |  <p><b>HAGIA IRENE<br/>CHURCH</b></p> |
| <p><b>THE BLUE MOSQUE</b></p>  | <p><b>TOPKAPI PALACE</b></p>   |
| <p><b>THE HAGIA SOPHIA<br/>GRAND MOSQUE</b></p>  | <p><b>OBELISK OF<br/>THEODOSIUS</b></p>  |
| <p><b>GRAND COVERED<br/>BAZAAR</b></p>   | <p><b>SERPENTINE<br/>COLUMN</b></p>  |
|  <p><b>LUNCH</b></p>  | <p><b>GERMAN<br/>FOUNTAIN OF<br/>WILHELM II</b></p>  |





# TO GET DETAILED INFORMATION

*you can visit our webside: <https://ruselparkresidence.com/>*

*you can review instagram page:*

*<https://www.instagram.com/ruselparkresidence/profilecard/?igsh=a2E0YWJzc3E5ODIx>*

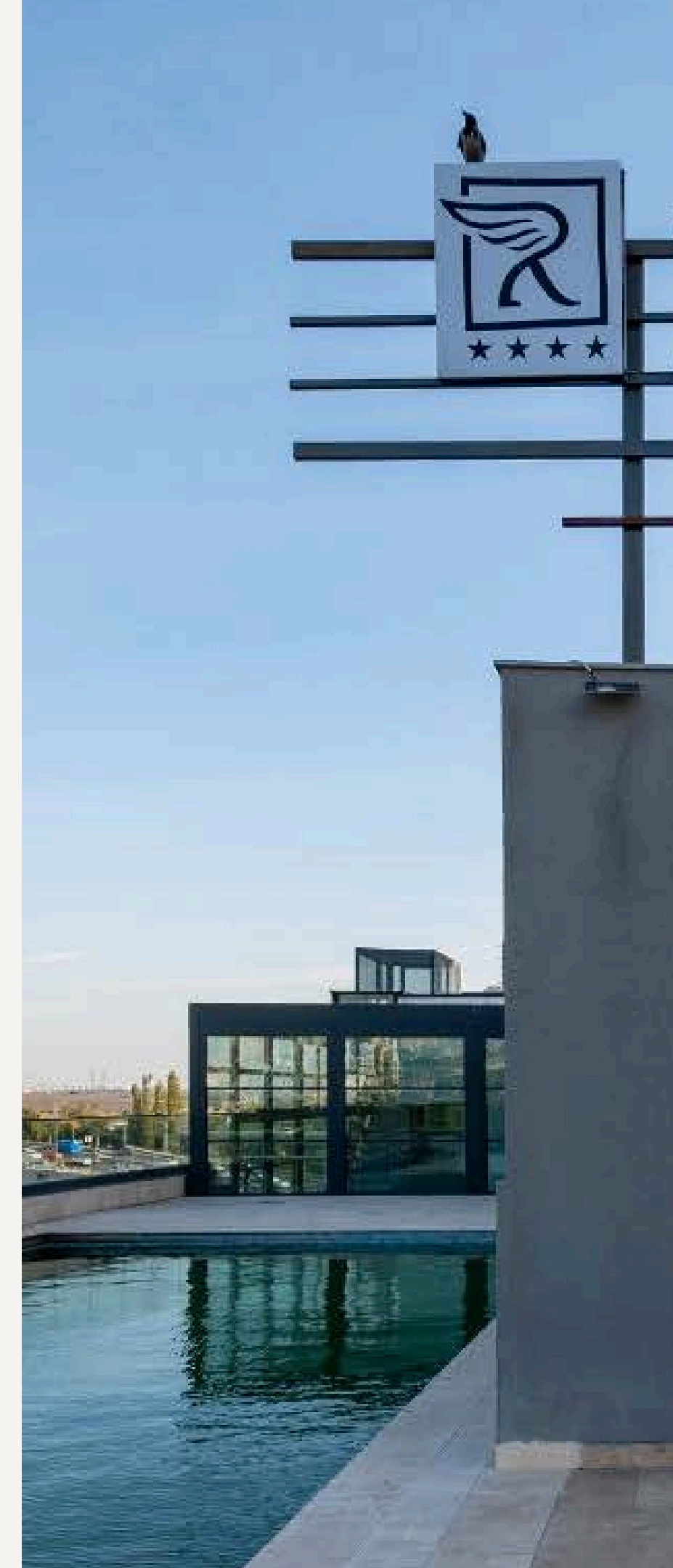
*mobile contact: +90 (501) 094 9494*

# FOR RESERVATION

*mobile contact: +90 (501) 094 9494*

*ido it via the website:*

*<https://ruselparkresidence.istbooking.com/en-US?sr=1contact>*





RUSEL PARK RESIDENCE